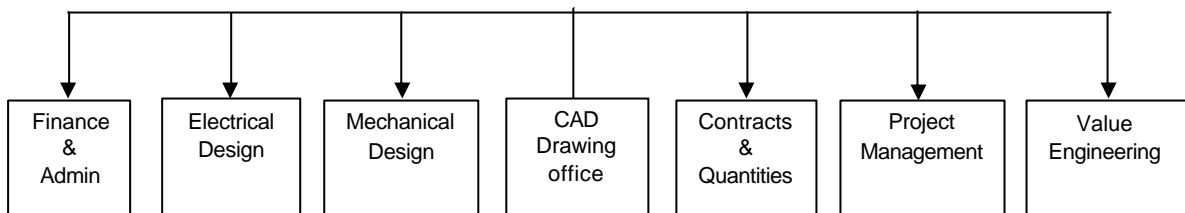


# ZEUS ENGINEERING

## PREAMBLE

Zeus Engineering, established in the Nineties, is a multi-disciplinary Engineering Consultancy Firm, providing Consultancy Services in the fields of Specialist Building Engineering Services of Electrical, Mechanical, & Civil Engineering and additionally Project Management and Value Engineering Services. Zeus Engineering consists of the following divisions, covering comprehensively the entirety of the above fields of speciality.

### Zeus Engineering



- Additionally we work with the following group companies of IMAC for expanded project support and integrated service provider in application of digital imagery, architectural, engineering & construction service.
- **CAD-Serv**  
Cad solutions & services
- **ADIT**  
Creative imagery
- **KWIK**  
Design – print - publish
- **GEO-Sci**  
A geo sciences company
- **Synergy**  
Integrated solutions
- **Instudio**  
Multimedia studios
- **Info-sys**  
Information databases
- **Archives**  
Archives & libraries
- **Imac Training**  
Aec & multimedia

Zeus, located in the city of Colombo, currently employees over 20 Engineering, Technical and Administrative staff. They are supported by a pool of skilled technicians utilizing the full potential of our Computer Aided Design, Modeling and Drafting. Our skilled and experienced professional engineers are proven with international experience, moreover have been working with several foreign clients and contractors for the last decade.

## **MISSION**

The Mission of Zeus Engineering could be summed up as follows.

***To ensure our clients achieve their goals through innovative, cost effective and quality engineering services, to international standards and practices.***

## **INTEGRATED ENGINEERING SERVICES**

We are a multi – disciplinary Consultancy Engineering Company and are therefore able to offer Integrated Engineering Services with in house co-ordination between the numerous specialty & general disciplines. Additional items could be extended to cover co-ordination with the external professional input fields of Architecture, & Structural Engineering.

A project is viewed as a "Total Enterprise" thus benefits from better conceived and co-ordinated design concepts where today the services are considered as a important inherent part of the total design philosophy.

## **INNOVATIVE DESIGNS**

We take pride in being able to offer innovative solutions for services that are current state-of-the-art effective and appropriate to each project. Some of the major project clientele are today enjoying the benefit & optimizing for clients need with high yield on their investment in being able to upgrade their system with minimal redundancy.

## **COMPUTER FACILITIES**

Zeus Engineering maintains a sophisticated and up to date in-house Computer Division with Internet with LAN/Internet connectivity facilities to keep abreast with important globalization and international data bases as well as international engineering & standard organizations namely BSI, CIBSE, ASHRAE, CEI, IEC etc.,

The System comprises of Servers Work-Stations and Personal Computers supported by a comprehensive Plotting, Printing, Scanning, Archiving, Output Formulas and other Peripheral Connections.

All major projects are planned, designed, detailed and modeled using current software such as Auto CAD, 3D Studio, Microstation SOFTDESK, Bentley System etc.

## **DESIGN TEAM**

The conceptual design of a project is given the most weightage as this is the critical stage in a project that governs the intended usability, buildability & economics. The conceptual design for a major project is therefore largely carried out by the Senior Engineers in charge of the project.

The detailed design is carried out by the design Team led by the Design Manager and overseen by the Senior Design Engineers in charge of the project.

## COMPANY DATA

<b>Name</b>	<b>Address</b>
Zeus Engineering	4 <sup>th</sup> Floor, 235/2, Galle Rd Colombo 04 Sri Lanka
	TEL : 2593289/90 Fax : 2591360 Email : zeuseng@sltnet.lk

### **Staff Presently Employed**

<b>Category</b>	<b>Number</b>
Engineers	04
Other	08

### **KEY PERSON**

N. K. Gunawardana, CEng, BSc, MSc. (Eng.),  
MIEE, MIE (SL).  
Managing Partner

### **Attending Specialist Consultants**

Percy Wickramasuriya, C.Eng, B.Sc(Eng), MIE(SL)  
Senior Engineering Consultant

Gamini Wickramasingha, C. Eng, B.Sc(Eng), M.Sc, MISL,  
Senior Engineering Consultant

## HUMAN RESOURCES

### ■ Engineers

Chartered Engineers - 02

Graduate Engineers - 02

### ■ Draft Persons

DOA / Senior Draft Persons - 03

Technical CAD Draft Persons - 04

CAD Draft Persons - 02

## LIST OF EQUIPMENT

■	Pentium Servers	-	02 Nos
■	Pentium Work Stations	-	06Nos
■	AO Plotters Ink Jet	-	01 Nos
	Laser	-	01 No
■	AO Scanner	-	01 No
■	Drawing Machines (Manual)	-	01 Nos
■	Test Equipment (Electrical)	-	06 Sets
■	Test Equipment (Mechanical) - (HVAC)		02 Sets
■	Commercial Vehicles	-	02 Nos

## BIO DATA OF KEY PERSON

**Name** : N K Gunawardana

**Status** : Managing Partner

**Age** : 54 Years

**Nationality** : Sri Lankan

**Qualifications**

**Academic** : B Sc. Eng.  
University of Sri Lanka – 1968

M Sc. – 1975  
University of Aston In Birmingham UK

**Professional** : Chartered Engineer

Member, Institute of Electrical Engineers  
London – 1974

Member, Institute of Engineers  
Sri Lanka – 1974

**Positions Held** : 1994 to-date Managing Director  
Electro-Serv Pvt. Ltd  
& Zeus Engineering Pvt. Ltd

Director  
Heavyfab Ltd

Managing Partner  
Zeus Engineering

1983 - 1994 Director – Development  
Consultant Pvt. Ltd

1969 - 1983 State Engineering Corp  
Senior Consulting (Electrical)  
Engineer  
Consultancy Division

1968 - 1969 Faculty of Engineering  
University of Peradeniya



## **Mechanical Engineering**

- Central Air Conditioning & Ventilation (CAV, VAV, VRV Systems)
- Refrigeration
- Fire Protection
- Garbage Disposal
- Mechanical Transportation & Conveyor Systems
- Gas Installations Industrial & Medical

## **Civil Engineering**

- Potable Water Systems
- Sewerage Systems
- Storm Water Disposal
- Hot Water Systems

## **Additional Services in respect of M&E Works**

- Contract Administration
- Quality Assurance
- Project Management
- Value Engineering
- Post Contract Assistance

## MAJOR PROJECT REFERENCES : (Current & Recent)

		Total Adjusted Project Value (in Rupees)
1.	Twin Towers (World Trade Center) <i>Status:Completed</i>	20,000 M
2.	Ceylinco Seylan Towers <i>Status:Completed</i>	1900 M
3	HNB Tower <i>Status:Completed</i>	4500 M
4.	Presidential Complex <i>Status: Design Completed</i> <i>Execution: Suspended</i>	1800 M
5.	Sri Lankan Air Lines <i>Status: Design Completed</i> <i>Execution: Suspended</i>	450 M
6.	Male Stadium <i>Status: Completed</i>	250 M
7.	Sri Lanka Institute of Information Technology <i>Status: Completed</i>	600 M
8.	Telecom City - Phase I <i>Status: Design Completed</i> <i>Execution: Pending</i>	1000 M

## REFERENCES

### Banks

- Hatton National Bank  
(T. B. Jayah Mawatha, Colombo 10.)
  
- Seylan Bank
  
- Public Bank Berhad
  
- Hongkong & Shanghai Banking Corp.

## REFERENCES

### Major Public Government Projects

- Expansion of Parliament  
- Sri Jayawardanapura Kotte
- Renovation of Presidential Secretariat
- General Hospital Expansion
- Refurbishment of General Treasury
- Expansion of Parliament – Sri  
Jayawardenapura Kotte
- Renovation of Presidential Secretariat
- Refurbishment of Ackland House
- Refurbishment of General Treasury
- Colombo Ports Authority
- Parsons Road Lighting
- Welikanda Township
- Superior Courts Lighting
- Presidential Secretariat
- Parliament of Sri Lanka
- Khetarama Cricket Stadium Floodlighting
- Sethsiripaya Development
- Specialist Centre for the Nawaloka Group
- Ceylinco Seylan Developments Ltd
- General Treasury Expansion
- Presidential Complex

## REFERENCES

### Commercial Projects

- Ceylinco – Seylan Towers
- Air Lanka
- Public Bank Berhad
- Twin Towers Echelon Square
- Liberty Plaza Development
- Hatton National Bank  
Sithma Towers
- Telecom City - SLT

## REFERENCES

### University Projects

- Ruhuna University Complex – Mapalana  
(Medical)
- Science Faculty – Wellamadama
- Medical Faculty – Karapitiya
- SLIIT Complex - Malabe

## REFERENCES

### Housing Projects & Township

- Rukmalgama Housing Scheme.
- Raddolugama Housing Scheme.
- Ranpokunagama Housing Scheme.
- Welikande Township

## REFERENCES

### Industrial

- Ceylon Tobacco Co. Ltd
- Lever Brothers (Unilever Ceylon)
- Nestles Lanka
- Ceylon Cement Corporation
- Ceylon Hardware Corporation
- Ceylon Tyre Corporation
- Richard Peiris & Company
- Maliban Biscuits
- Ceylon Biscuits
- Ceylon Glass Company
- Unilever Group
- Ceylon Tobacco Co. Ltd., Colombo & Kandy
- Dipped Products Ltd.
- Nestles (Lanka) Ltd.
- W N G Perera Oil Mills, Kurunegala
- L P Dharmadasa & Company, Peliyagoda
- Industrial Development Board, Peliyagoda
- Lanka Aluminium Industries Ltd. Seeduwa
- J T I Badulla
- Alumex (Pvt) Ltd.
- S A Silva & Sons Lanka (Pvt) Ltd.
- Ravi Industries Ltd. Stage 1

## REFERENCES

- Lanka Diamonds Ltd.
- Ravi Industries Ltd. Stage II
- Jaqalanka (Pvt) Ltd.
- T K Fastener Stage VI
- Young An Lanka Stage II
- Ansell Lanka, Biyagama
- Kabool Lanka (Pvt) Ltd.
- Shinwoo Lanka
- Fine Lanka
- Cosmos Macky Industries
- Bosang Lanka
- Ansell Lanka, Udapola
- Ansell Lanka, Paiyagala
- Shadowline (Pvt) Ltd.
- G P Garments
- Brentanno Lanka
- Unichela (Pvt) Ltd.
- Star Garments.
- Bodyline (Pvt) Ltd.
- Oxford Garments
- Tri Star Apparels
- Bernard Botejue
- Kenmartex
- Dialtex
- Unilever (Ceylon) Ltd.

## REFERENCES

- Bensiri Rubber Products
- Free Lanka Granite & Marble Exports Stage I
- M P M Magpek Exports I
- International Cosmetic Accessories Stage II
- Alloy Fabricators
- Atlas Glove Pvt Ltd. Stage I
- Laws Garment & Knitting Factory Ltd. Stage II
- Atlas Glove Pvt Ltd. Stage II
- T K Fastener Lanka Pvt Ltd. Stage I
- Laws Garment & Knitting Factory Ltd. Stage IV
- Bradbury Wilkinson Stage I
- Laws Garments & Knitting Factory Ltd. Sage iV
- TK Fastener Lanka Pvt Ltd. Stage II
- United Tobacco Processing Ltd.
- Young An Lanka (Pvt) Ltd. Stage L
- Free Lanka Granite & Marble Biyagama
- Siegfried Fisher (Pvt) Ltd. Stage LLL
- Ceramic World Pvt Ltd.
- T K Fastener Lanka (Pvt) Ltd.
- T K Fastener Lanka (Pvt) Ltd. Stage IV
- T K Fastener Lanka (Pvt) Ltd. Stage V
- Ansell Lanka – Biyagama
- Oils & Fats Expansion Pulmodai
- Ceylon Glass Company Expansion

## REFERENCES

- Bodyline Ltd
- Indorama International
- Ceytea Agrapatne
- Mineral Sands Processing, Pulmodai
- James Finlay – Ingiriya
- Ceylon Petroleum Corporation
- Hayleys Group

## REFERENCES

### Hospitals

- Sri Jayawardhanapura General Hospital
- General Hospital Colombo Expansion (Finish Project)
- Nawaloka Hospital

## REFERENCES

### 5/4 Star Hotel Projects

- Colombo Hilton
- Ramada Renaissance
- Airport Garden Hotel
- Club Robinson
- Kandalama Hotel, Kandalama
- Hotel Culture Club, Kandalama
- Villa Ocean View, Wadduwa
- Induruwa Beach Hotel, Induruwa
- Hotel Ceylon Intercontinental

## LIST OF MAJOR LIGHTING PROJECTS IN SRI LANKA

1. National Stadium – Male - Flood Lighting for FIFA Foot Ball
2. Khetarama Stadium - Flood Lighting for Day/Night Cricket
3. SAF Games Installations - Flood Lighting for Indoor Sports Facilities
4. Sugathadasa Stadium - Flood Lighting for Foot Ball
5. Presidential Secretariat - Conference Room – Special Lighting
6. State Drive – Sri Lanka - Stage Lighting
7. Auditorium at Ruhunu Campus Sri Lanka - Stage Lighting
8. New Elphinston Theatre - Stage Lighting
9. Rukmanidevi Memorial Auditorium, Negombo, Sri Lanka - Stage Lighting
10. Bishop's College Auditorium Colombo, Sri Lanka - Stage Lighting
11. Teachers Training Institute, Meepe, Sri Lanka - Stage Lighting
12. National Institute of Education, Maharagama Sri Lanka - Stage Lighting

## REFERENCES

### Major International Contractor Reference

### Major Public Projects

- |   |                        |                              |
|---|------------------------|------------------------------|
| ■ | Baifour Beaty UK,      | Mahaweli                     |
| ■ | Nattals, UK            | Mahaweli                     |
| ■ | Mann Germany           | Mahaweli                     |
| ■ | Voest Alpliene Austria | Mineral Sands Corp           |
| ■ | BEC France             | Matara                       |
| ■ | Keangnam Korea         | Liberty Plaza                |
| ■ | Intertec Denmark       | Raddoluwa Housing Project    |
| ■ | Intertec Denmark       | Echelon Square Twin Towers   |
| ■ | ARE Finland            | Ceylinco Seylan Towers       |
| ■ | Leminkanen Finland     | General Hospital Stage II    |
| ■ | Leminkanen Finland     | General Hospital Stage I     |
| ■ | ODD Japan              | Sri Jayawardenapura Hospital |
| ■ | Taisei Corp Japan      | Hilton                       |
| ■ | Mitsui / Sanken        | Several Hotel Projects       |
| ■ | Kajima Corp Japan      | Quay at Maldives             |
| ■ | Spie Batignoles France | Water Treatment Plant        |
| ■ | SNK Japan              | Rukmale Housing Project      |
| ■ | SNK Japan              | Sithma Development           |